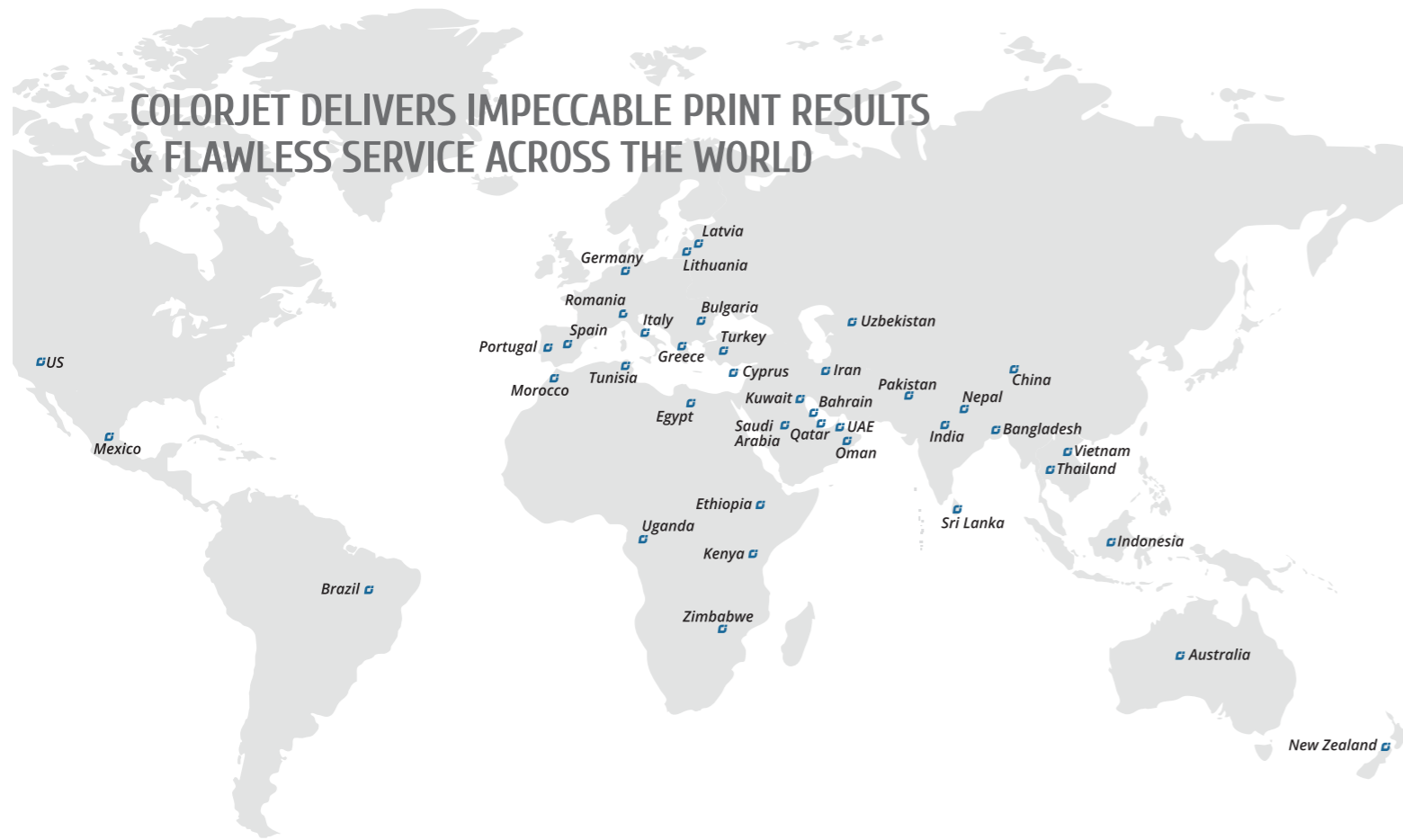
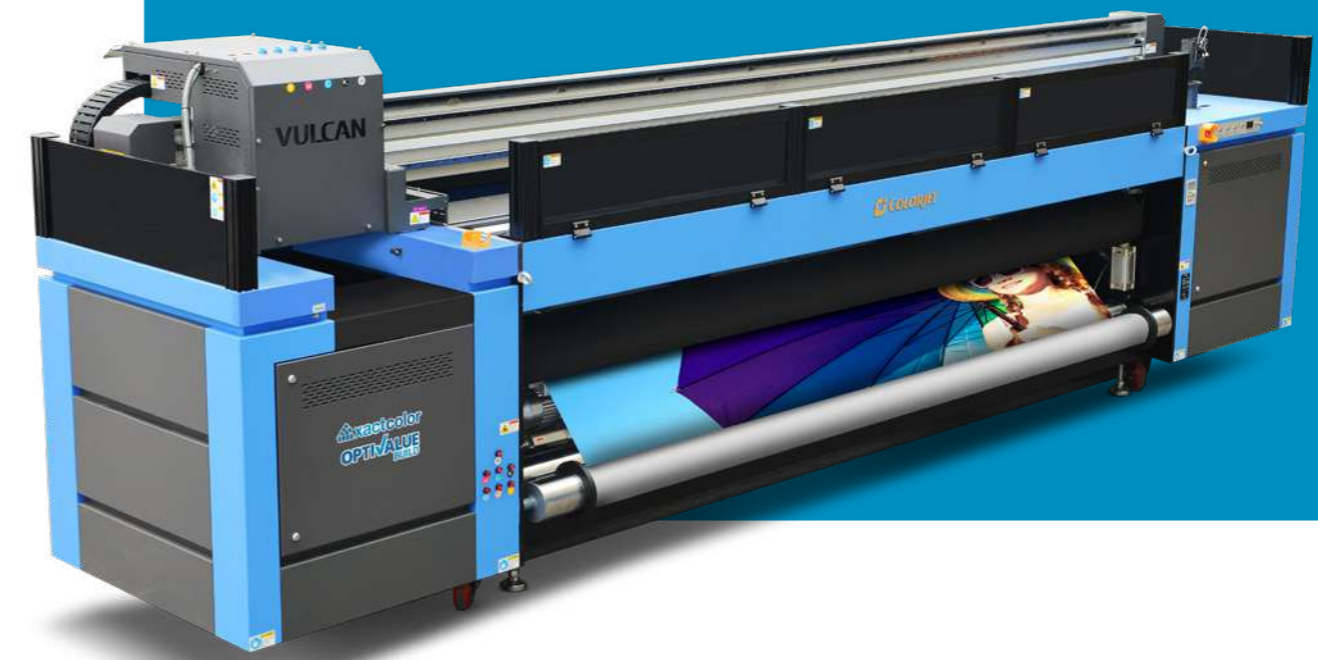


COLORJET DELIVERS IMPECCABLE PRINT RESULTS & FLAWLESS SERVICE ACROSS THE WORLD



DIGITAL PRINT LEADERSHIP



Maximum Applications & Profitability for Signage & Fabric Printing Businesses



COLORJET GROUP

INDIA : A-6&7, In Front Of Samsung Display Unit, Sector-81, Noida-201305 (U.P.), INDIA. T +91 7217 885 728
 DUBAI : Block-A, Office No: 115, Hamsah Building, Karama, P.O. Box: 123360, Dubai-UAE. T 00971 43961744
 info@colorjetgroup.com | www.colorjetgroup.com

Accessories shown along with different printers in this brochure are not part of standard equipment. The final results of Colorjet are purely indicative and non-binding. Alterations and amendments can occur in specifications, materials or accessories without prior notice. Periodic maintenance is important for best quality output. Colorjet shall not be liable for any special or consequential damages that result from the use of, or the inability to use, the materials or the performance of the products. All trademarks, logos, symbols and designs depicted / mentioned in this brochure are trade names, trademarks and copyrights of their respective brand owners.

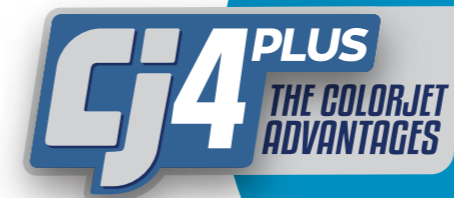
COLORJET: INDIA'S LARGEST MANUFACTURER OF DIGITAL INKJET PRINTERS

Whatever you can imagine, ColorJet has the gear to transform your imagination into reality. Since inception in 1995, the ColorJet Group has been powered by over 1500 senior man-years of intensive digital print technology experience. As the leader in Inkjet technology, we offer state-of-the-art large-format printing solutions designed with exceptional speed, flexibility and quality.

The reliability and performance of ColorJet Group, the largest manufacturer of digital inkjet printers, can be seen and experienced in 40 countries worldwide. ColorJet provides versatile, high-quality, and heavy-duty digital signage printers to print on an astonishing range of substrates and take signage printing businesses to the next level.

The company maintains its operations via two manufacturing facilities and sales offices spread across seven countries, including India, Sri Lanka, Saudi, UAE and China. To date, ColorJet has been installed and implemented over 4,000 of its printing solutions and products across 450 cities worldwide, backed by a strong 278 members team, of which almost 100 are in technical related functions. No wonder that apart from leading professionals, the Government of India has also recognized the technological innovation strength of ColorJet's R&D department.

With dependable, high quality and robust output, ColorJet users deliver time and again. Our capabilities ensure maximum business and growth for all associated with us.



- 1 Complete Range of Signage Printers
- 2 Consumer Focused 3E Product Design Philosophy : Economy, Efficiency & Eco Friendly
- 3 R&D Department Recognised by the Dept. of Science & Technology, Govt. of India
- 4 Strong Service & Training Infrastructure



UV

VULCAN

HIGH-SPEED 3.2 M ROLL-TO-ROLL
UV LED INKJET PRINTER



A PERFECT SOLUTION FOR INDOOR AND OUTDOOR APPLICATIONS



ColorJet's **VULCAN** is a high speed 3.2 m roll-to-roll UV LED Inkjet printer. This back to back printing machine is used for printing banners, signage, billboards, terminal graphics, bus shelters, tradeshow graphics, window displays, flags, wall graphics, building wraps, POP and POS graphics, etc. It is equipped with the capability to print 3-layer, 4-layer, and 5-layer printing. LED lamps and UV inks list this industrial UV printing machine as a green and nature-friendly product.

Our UV roll to roll printer **VULCAN** let you experience unprecedented print speed, high-quality, and lucrative total cost of ownership. Built on a robust industrial production platform and never seen before automation, this industrial UV printing machine can print high volumes and withstands heavy-duty cycles without compromising on quality.

SPECIFICATIONS

		VULCAN 3201								
Model		V3201Y			V3201R			V3201R6		
Printing Technology		Drop-on-demand, Piezo Electric Inkjet on linear motion								
Print Heads		Industrial Grade Jetting Assemblies								
No. of Print Heads		2 to 7 (3.5 PL)			2 to 9 (7 PL)			2 to 9 (5 PL)		
Media	Width	3300 mm								
	Thickness	Maximum 10 mm with Liner								
	Roll Outer Diameter	Maximum 300 mm								
	Roll Weight	Maximum 150 Kgs								
	Core Diameter	2" & 3"								
Types		Ceiling Film, Vinyl, Advertising Banner, PET, Wall paper, Fabric and many more								
Printing Width		Maximum 3200 mm								
Inks	Types	UV Curable Ink								
	Colors	6 Colors (CMYK LC LM) + W (LC LM optional)			6 Colors (CMYK LC LM) + White (LC LM optional) + V					
Printing Resolution (Dots Per Inch)		Maximum 2400 dpi								
Distance Accuracy		Error of less than ±0.3 % of distance travelled								
Connectivity		High Speed USB 3.0								
Power Requirements		AC 220 V ±10%, 30 A, 50/60 Hz								
Dimensions (Printer only)		5320 x 1260 x 1650mm (LxWxH)								
Dimensions (With Packing)		5830 x 1600 x 2090mm (LxWxH)								
RIP Software		Onyx (ColorJet Edition)								
Weight		2550 Kgs N.W., 2850 Kgs G.W.								
Environmental	Power ON	Temperature: 18 to 28°C. Humidity: 35 to 80% RH (Non-condensing)								
	Power OFF	Temperature: 5 to 40°C. Humidity: 20 to 80% RH (Non-condensing)								
		Print Speed (Sq M/Hrs)								
		Kyocera			Gen 5			Gen 6		
		1 Row	1 Row	1 Row	2 Row	3 Row	1 Row	2 Row	3 Row	
Mode	Print DPI	Passes	2 Heads	4 Heads	2 Heads	4 Heads	6 Heads	2 Heads	4 Heads	6 Heads
Mode 1	635 x 600	4	-	-	-	-	-	29	53	73
Mode 2	635 x 900	6	-	-	19	34	51	24	43	56
Mode 3	635 x 1200	8	-	-	16	28	43	18	33	44
Mode 4	960 x 900	6	35	-	-	-	-	-	-	-
Mode 5	960 x 1200	8	27	-	-	-	-	-	-	-
Mode 6	960 x 1800	12	17	-	-	-	-	-	-	-
Mode 8	960 x 1200	4	-	65	-	-	-	-	-	-
Mode 9	960 x 1800	6	-	43	-	-	-	-	-	-
Mode 10	960 x 2400	8	-	32	-	-	-	-	-	-



For machine demo,
scan QR code

COLORJET
India's largest manufacturer of digital inkjet printers

UV

VULCAN PRIME

1.6M UV ROLL-TO-ROLL PRINTER

MULTIPLE DECO-SIGN APPLICATIONS ENHANCED BUSINESS OPPORTUNITIES



Vulcan Prime, the 1.6m UV Roll-to-Roll printer, serves the dual purpose for **signage and interior décor industry**. For signage, the machine offers back-to-back superior quality prints with its multi-layered technology, whereas its embossed 3D effects prints will be a game-changer in the world of interior decor.

Along with ultra-high-quality printing up to 2400 DPI, **Vulcan Prime** is embedded with the UV LED curing process, making printing faster and ecological and ensuring access to numerous printing applications to help your business grow.

SPECIFICATIONS

Vulcan Prime				
Model		V1607R		
		Variant 1	Variant 2	Variant 3
Printing Technology		Drop-on-demand, Piezo electric inkjet		
Print Heads		Industrial Grade Jetting Assemblies		
No. of Print Heads		2 (7 PL)	3 (7 PL)	3 (7 PL)
Media	Width	1650 mm		
	Thickness	Maximum 5 mm with liner		
	Roll Outer Diameter	Maximum 300 mm		
	Roll Weight	Maximum 75 kgs		
	Core Diameter	76.2mm (3 in)		
Types		Ceiling Film, Vinyl, Advertising Banner, PET, wall paper, Fabric, and many more		
Printing Width		Maximum 1600 mm		
Ink	Types	UV Curable Ink		
	Colors	CMYK	CMYK + W (In line)	CMYK+W(Staggered)
Printing Resolution (dots per inch)		Maximum 2400 dpi		
Distance Accuracy		Error of less than ±0.1 % of distance travelled, or ±0.1 mm, whichever is greater		
Connectivity		High speed USB		
Power Requirements		AC 220 V ±10%, 7 A, 50/60 Hz		
Dimensions (Printer only)		3330mm x 937mm x 1506mm (LxWxH)		
RIP software		Onyx (Colorjet Edition)		
Weight		642 Kgs		
Environmental	Power ON	Temperature: 18 to 28°C Humidity: 35 to 45%RH (non-condensing)		
	Power OFF	Temperature: 5 to 40°C Humidity: 20 to 60%RH (non-condensing)		
Mode	DPI	Passes	Output Sqm/hr	Output Sqft/hr
Mode 1	360 x 900	3 Pass	14	150
Mode 2	720 x 600	4 Pass	11	120
Mode 3	720 x 900	6 Pass	8.4	90
Mode 4	720 x 1200	8 Pass	6.5	69
Mode 5	720 x 1800	12 Pass(Backlit)	4.2	45
Mode 6	720 x 2400	16 Pass(Backlit)	3.2	34

*The speeds mentioned above are for Color-White Staggered head configuration.



For machine demo,
scan QR code



UV

VULCAN HYBRID X

ONE MACHINE TWO PRINTING FUNCTIONS

2-IN-1 VERSATILE 2 M FLATBED & ROLL-TO-ROLL UV PRINTER, SPEED: 78 SQM/HR



Explicitly designed to satisfy the multipurpose needs of processing enterprises, **Vulcan Hybrid X** is a 2 mtr High-Speed printer that delivers highly precise results in no time. The machine can be used as both flatbed and roll to roll printers and boosts business growth with a higher return on investment (ROI).

Vulcan Hybrid X can work on the substrates like ACP, foam, board, flute board, glass, ceramic tiles, wood, and a wide range of vinyl and flexible media.

SPECIFICATIONS

VULCAN HYBRID 2001									
Model		V2001Y	V2001R	V2001R6					
Printing Technology		Drop-on-demand, Piezo electric inkjet							
Print Heads		Kyocera, Ricoh G5 & G6							
No. of Print Heads		2 to 6 (3.5 PL)	2 to 9 (7 PL)	2 to 9 (5 PL)					
Media	Thickness	1-30mm							
	Size	2000mm							
	Handling	Conveyor							
Printing size		2000mm							
Curing System		UV LED (water cooling)							
Ink	Types	UV Ink							
	System	Bulk Ink Refillable System							
	Colors	CMYK/LC/LM+Wx	CMYK/LC/LM+W+V	CMYK/LC/LM+W+V					
Distance Accuracy		Error of less than ± 0.3 % of distance travelled, or ± 0.3 mm, whichever is greater							
Connectivity / Interface		USB 2.0							
Power Requirments		AC 220 V, 30A, 50/60 Hz							
Dimensions		4450 x 1400 x 1400 mm							
RIP Software		Onyx (ColorJet Edition)							
Weight		1800 Kg							
Print Head control		Temperature and Voltage control by Waveform Operation							
Environmental		Temperature 20 to 28°C, Humidity 40 to 60%							
Print Speed (In Sq. Meter / Hrs)									
Mode	Print DPI	Passes	Kycoera	Ricoh 5			Ricoh 6		
			1 Row	1 Row	2 Row	3 Row	1 Row	2 Row	3 Row
Mode 1	726 x 1200	4	43	-	-	-	-	-	-
Mode 2	726 x 1800	6	28	-	-	-	-	-	-
Mode 3	726 x 2400	8	21	-	-	-	-	-	-
Mode 1	635 x 600	4	-	-	-	-	29	59	78
Mode 2	635 x 900	6	-	15	27	41	20	40	54
Mode 3	635 x 1200	8	-	12	22	32	15	30	30

*Also available in 5.2 m & 3.2 m print width



For Vulcan Hybrid 3202
Scan Here



For Vulcan Hybrid 5003
Scan Here

COLORJET
India's largest manufacturer of digital inkjet printers

UV

VERVE LED

TRUE FLATBED LED UV PRINTER

VERVE LED (2513/3220HB/3225HB SERIES)

ENHANCED PRINT BUSINESS OPPORTUNITIES



- **UV LED Curing Flatbed** enables high quality direct printing on almost any kind of materials, including wood, glasses, leather, ceramic tiles & much much more
- High-quality, productive colour scheme with groundbreaking features:

- Dual Negative Pressure System
- Hydraulics Stoppers
- 4-Zone Vacuum System
- White Ink Circulation System
- Mechanical Material Alignment System
- Metal Raster for Precision Printing*
- Dual Servo Motor Driven Gantry with Metal Raster*
- Dual Media Height Detection System*

*Applicable on Verve 2513 series only

ADDITIONAL FEATURES

ANTI-CRASH SENSOR to prevent media from damaging the heads while printing.
 STATIC SUPPRESSOR for neutralizing static charge on the substrate being printed.

SPECIFICATIONS

VERVE LED 2513											
Models		K2513M			K2513R			K2513R6			
Printing Technology		Drop-on-demand, Piezo Electric Inkjet									
Print Heads		Industrial Grade Jetting Assemblies									
No. of Print Heads		4 to 8 (6 PL)			2 to 9 (7 PL)			3 to 9 (5 PL)			
Media	Size	2.56 m x 1.68 m									
	Thickness	Maximum 100 mm									
	Handling	Suction & Blower									
Printing size		2.44 m x 1.22 m									
Curing System		Dual UV LED Lamps									
Ink	Type	UV LED Curable Ink									
	System	Bulk Ink Refillable System									
	Colors	CMYK + W + V									
Printing Resolution (dots per inch)		1200 dpi									
Distance Accuracy		Error of less than ±0.3 % of distance travelled, or ±0.3 mm, whichever is greater									
Connectivity/Interface		USB 2.0									
Power Requirements		AC 220 V, 30 A, 50/60 Hz									
Dimensions (Printer only)		4660 x 2180 x 1480 mm									
Dimensions (With Packing)		4830 x 2280 x 1840 mm									
RIP software		Onyx (ColorJet Edition)									
Weight (Net Weight/Gross Weight) kgs		1450 / 1650									
Environmental	Power ON	Temperature: 18 to 28 °C Humidity: 20 to 60% RH (Non-condensing)									
	Power OFF	Temperature: 5 to 40 °C Humidity: 20 to 80% RH (Non-condensing)									
Print Speed (Sqm/hr)											
			KM 1024 a			Gen 5			Gen 6		
Mode	Print DPI	Passes	4 Heads	8 Heads	2 Heads	4 Heads	6 Heads	2 Heads	4 Heads	6 Heads	
			1 Row	2 Rows	1 Rows	2 Rows	3 Row	1 Row	2 Row	3 Row	
Mode 1	635 x 900	6	-	-	15	27	41	-	-	-	
Mode 2	635 x 1200	8	-	-	12	22	32	-	-	-	
Mode 1	635 x 600	4	-	-	-	-	-	32	53	68	
Mode 2	635 x 900	6	-	-	-	-	-	22	39	52	
Mode 1	540 x 1440	4	34	61	-	-	-	-	-	-	
Mode 2	540 x 1080	6	23	41	-	-	-	-	-	-	
Mode 3	540 x 1440	8	17	30	-	-	-	-	-	-	

*Gradient weak speeds are only for CMYK.



For Verve Led 3220 HB
Scan Here



For Verve Led 3225 HB
Scan Here



UV

VERVE XL 3220

TRUE FLATBED UV PRINTER



MORE SPEED! MORE OUTPUT! ENHANCED PROFITABILITY!



Verve XL 3220 is tech-enabled with an independent four-zone vacuum adsorption platform to adjust to soft and rigid media easily. Optimized to print on size 3.2x2 m and an adjustable head height of 200 mm (optional feature). Verve XL 3220 is an ideal printer for high speed & high-quality printing.

SPECIFICATION:

- Comes with Anti-Crash system
- Automatic Head Height Detector
- Print heavy substrates upto 100kg
- Equipped with Japanese noise-free guide rail
- Can print heavy substrates upto 100kgs

ADDITIONAL FEATURES

- High Precision
- Position Pin and table with the scale rule
- Multiple Color Layout
- High energy LED
- Linear motor drive
- Y axis is dual motor + Ball Screw movement control
- Two vacuum pump
- Horizontal Bed

SPECIFICATIONS

VERVE XL 3220											
Models	KXL 3220 Y		KXL 3220 R			KXL 3220 R6					
Printing Technology	Drop-on-demand, Piezo Electric Inkjet										
No. of Print Heads	2-6 (3.5 PL)		2-9 (7 PL)			2-9 (5PL)					
Head Type	Kyocera, Ricoh G5 & G6										
Ink	VERJET – based on the printheads and support policy										
Media	Thickness	1-100mm									
	Handling	Suction & Blower									
Printing size	3200x2000mm										
Curing System	UV LED (water cooling)										
Ink	Type	UV Ink									
	System	Bulk Ink Refillable System									
	Colors	CMYK/LC/LM+Wx	CMYK/LC/LM+W+V			CMYK/LC/LM+W+V					
Distance Accuracy	Error of less than ± 0.3 % of distance travelled, or ± 0.3 mm, whichever is greater										
Connectivity/Interface	USB 2.0										
Power Requirements	AC 220 V, 30A, 50/60 Hz										
Dimensions	5060x2780x1350mm										
RIP software	ONYX(ColorJet Edition)										
Weight	2350Kg										
Print Head control	Temperature and Voltage control by Waveform Operation										
Environmental	Temp. 20°C-28°C; Humidity 40%-60%										
Print Speed (Sq. Meter/Hrs)											
Mode	Print DPI	Passes	K3220Y (KYOCERA)			K3220R5 (RICOH 5)			K3220R6 (RICOH 6)		
			1 ROW	2 ROW	3 ROW	1 ROW	2 ROW	3 ROW	1 ROW	2 ROW	3 ROW
Mode 1	726x1200	4	39	-	-	-	-	-	-	-	-
Mode 2	726x1800	6	27	-	-	-	-	-	-	-	-
Mode 3	726x2400	8	19	-	-	-	-	-	-	-	-
Mode 1	635x600	4	-	-	-	32	53	73	-	-	-
Mode 2	635x900	6	-	17	31	43	21	39	51	-	-
Mode 3	635x1200	8	-	13	22	30	16	29	38	-	-

*All speeds mentioned are for CMYK

UV

VERVE HYBRID

UV FLATBED/ROLL-TO-ROLL PRINTER

VERVE HYBRID (3220/3225 SERIES)

DELIVERS SUPER SPEED VERSATILE UV PERFORMANCE



VERVE HYBRID is a 3.2 M UV Flatbed Roll to Roll Hybrid printer that delivers fast and versatile UV performance. This UV printer enables super speed production and is engineered for high-endurance work and low running costs to deliver high-quality print for a long time.

FEATURES FOR HIGHER PRODUCTIVITY

- > Extra wide print width – 3.2m
- > Proprietary AIVC jetting technology
- > Variable drop technology
- > Accurate and reliable high speed printing
- > Large range of printable media
- > Solid build quality, low maintenance

ADDITIONAL FEATURES

- > Precisely engineered using 3D CNC Machinery
- > Intelligent Media Thickness System
- > Anti-Crash Sensor
- > Advanced RIP for faster processing & better colour management
- > Fully customised printer settings for enhanced print results
- > Industrial grade jetting assembly
- > Consistent print quality through the life of printhead
- > System designed to use white ink as additional color
- > Adjustable UV lamp power enables better drying control
- > Vacuum system can be adjusted in four zones
- > Specially formulated inks with wider color gamut & higher density.

SPECIFICATIONS

VERVE HYBRID 3220												
Models		Y3220Y	Y3220R				Y3220R6					
Printing Technology		Drop-on-demand, Piezo Electric Inkjet										
Print Head Type		Industrial Grade Jetting Assemblies										
No. of Print Heads		2 to 8 (3.5 PL)	2 to 12 (7 PL)				2 to 12 (5PL)					
Media	Size	3.2m x 2.0m Bed / 3.2m x Unlimited Roll										
	Thickness	Maximum 100 mm										
	Handling	Suction & Blower										
Printing Size		3.2m x 2.0m / 3.2m x Unlimited Roll										
Curing System		Dual UV LED Lamps										
Ink	Type	UV LED Curable Ink										
	System	Bulk Ink Refillable System										
	Colors	CMYK + W (Lc Lm)	CMYK + W + V (Lc Lm Optional)									
Printing Resolution (dots per inch)		2400 dpi										
Distance Accuracy		Error of less than ±0.3 % of distance travelled, or ±0.3 mm, whichever is greater										
Connectivity/Interface		USB 3.1										
Power Requirements		AC 220 V, 30 A, 50/60 Hz										
Dimensions (Printer Only)(LxWxH)		5600mm x 3350mm x 1550mm										
Dimensions (With Packing)(LxWxH)		5780mm x 2280mm x 1940mm, 4180mm x 880mm x 1340mm										
RIP Software		Onyx (ColorJet Edition)										
Weight		N.W. 3360 Kg, G.W. 3900 Kg										
Environmental	Power ON	Temperature: 18 to 28 °C Humidity: 20 to 60%RH (Non-condensing)										
	Power OFF	Temperature: 5 to 40 °C Humidity: 20 to 80%RH (Non-condensing)										
Flatbed / Roll-to-Roll Print Speed (Sqm/hr)												
3220 Hybrid			Kyocera		Ricoh 5				Ricoh 6			
Mode	Print DPI	Passes	2 Heads	4 Heads	2 Heads	4 Heads	6 Heads	8 Heads	2 Heads	4 Heads	6 Heads	8 Heads
			1 row	2 row	1 row	2 row	3 row	4 row	1 row	2 row	3 row	4 row
Mode 1	604 x 600	4	48	75	-	-	-	-	-	-	-	-
Mode 2	604 x 900	6	33	54	-	-	-	-	-	-	-	-
Mode 3	604 x 1200	8	25	43	-	-	-	-	-	-	-	-
Mode 1	635 x 600	4	-	-	25	48	-	-	34	55	71	91
Mode 2	635 x 900	6	-	-	17	33	51	68	24	41	54	76
Mode 3	635 x 1200	8	-	-	13	25	43	58	18	33	43	61

*Also available in 3225 bed size, Please refer to website



For Verve Hybrid 3225
Scan Here

COLORJET
India's largest manufacturer of digital inkjet printers

UV

VERVE mini

COMPACT FLATBED LED UV PRINTER

ONE PRINTER MULTIPLE APPLICATIONS



The new Verve Mini is a True Flatbed UV Printer to redefine printing experience faster and more exhilarating with less investment and offers big opportunities. Verve Mini is UV flatbed printer, now coming up with an automatic head adjuster up to 100 mm. Equipped with 1000 x 1600 mm print size, adopting new 4 to 7 Pcs Ricoh Print Head with Print Speed of 60 sqft/h.

SPECIFICATIONS

VERVE MINI				
Model		KB6622	KB7622	
Printing Technology		Drop-on-demand, Piezo Electric Inkjet		
Print Heads		Industrial Grade Jetting Assemblies		
No. of Print Heads		6 heads	7 heads	
No. of Rows		2 rows	3 rows	
Media	Size	1050 x 1650 mm		
	Thickness	Maximum 65 mm / 100 mm		
	Handling	Suction & Blower		
Printing Size		1000 x 1600 mm		
Ink	Inks	UV LED Curable Ink		
	Types	Rigid/Universal/Flexible		
	Colors	CMYK W V		
Curing System		Dual UV LED Lamps		
Printing Resolution (dots per inch)		1800 dpi		
Distance Accuracy		Error of less than ±0.3 % of distance travelled, or ±0.3 mm, whichever is greater		
Connectivity / Interface		High Speed USB		
Power Requirements		AC 230V, 20A, 50/60 Hz		
Dimensions (Printer Only) (LxWxH)		2250 x 2200 x 1200 mm		
Dimensions (With Packing) (LxWxH)		2700 x 1400 x 1700 mm		
RIP Software		Flex		
Weight		Net Weight. 375 kg, Gross Weight. 635 kg		
Environmental	Power On	Temperature 20 to 28 C, Humidity 40 to 60 % RH (Non-Condensing)		
	Power Off	Temperature 20 to 28 C, Humidity 40 to 60 % RH (Non-Condensing)		
Speed (in sqm/hrs)	Print DPI	Passes	Print Speed Sqft/hr (only CMYK+W)	Print Speed Sqft/hr (CMYK+W+V)
Mode 1	720 x 900	6	60	60
Mode 2	720 x 1200	8	48	48



For machine demo, scan QR code

COLORJET
India's largest manufacturer of digital inkjet printers

SOFT SIGNAGE

SOFTJET GRAND®

8 COLOR
OPTION AVAILABLE

GRAND FORMAT 3.2 MTR. SOFT SIGNAGE PRINTER

FOR REDUCED ENVIRONMENTAL IMPACT & GREATER PROFITABILITY



SOFTJET GRAND, the 3.2 mtr wide printer is the perfect solution, completely in-sync with the diverse requirements of today's well-developed market. An industrial soft signage printer that combines digital advantages, efficiently optimised to replace PVC-based media completely. It easily prints on polyester-based fabrics which can be recycled and uses environment-friendly aqueous based inks. **Softjet Grand** is most suitable for a large range of soft signage applications, such as banners, displays, wall decorations, signage, parasols, flags, backdrops and outdoor advertisements.

- Ultra High Productivity
- Reduced Environmental Impact
- Vibrant Colors & Reproduction
- Maximum Applications & Profitability



SPECIFICATIONS

		SOFTJET GRAND		
Models		L8424	L8824	
Printing Technology		Drop on demand, Piezo electric inkjet		
Print Heads		Industrial Grade Jetting Assemblies		
No. of Print Heads		8	8	
Fabric	Width	3300 mm		
	Thickness	Maximum 10mm with Liner		
	Roll Outer Diameter	Maximum 300mm		
	Roll Weight	Maximum 90kg		
	Core Diameter	76.2mm		
Types		Polyester, Satin, Canvas & Blends		
Printing Width		Maximum 3200mm		
Inks	Types	Direct disperse inks		
	Colors	4	8	
Printing Resolution (dots per inch)		Maximum Up to 1440 dpi		
Distance Accuracy		Error of less than ±0.3 % of distance travelled, or ±0.3 mm, whichever is greater		
Media Heating System		Pre-heater and post-heater, setting range for the preset temperature: 30°C to 60°C Dryer setting range for the preset temperature: 30°C to 60°C		
Connectivity		High Speed USB		
Power Requirements		AC 220 V, 40A(± 10%), 50Hz		
Dimensions (Printer only) (LxWxH)		5300 x 1450 x 1650mm		
RIP Software		PhotoPrint (ColorJet Edition)		
Weight (approx. with stand)		2000 Kgs		
Environmental	Power ON	Temperature: 18°C to 28°C. Humidity: 35% to 80%RH (non-condensing)		
	Power OFF	Temperature: 5°C to 40°C. Humidity: 20% to 80%RH (non-condensing)		
Print Speed (Sqm/hr)				
Modes	Print DPI	Passes	L8424	L8824
Mode 1	540 x 720	2	167	98
Mode 2	540 x 1080	3	116	68
Mode 3	540 x 1440	4	87	51
Mode 4	720 x 1080	6	46	26
Mode 5	720 x 1440	8	42	24
Fusing Unit Specification	Power Requirement	Voltage AC 380 V ± 10%, 50-60 Hz, 21A,		
	Heating Range	160°C- 240°C Heat Energy		
	Dimensions	5180mm x 900mm x 1540mm (LxWxH)		
	Max Fabric Width	3300 mm		



For machine demo,
scan QR code

COLORJET
India's largest manufacturer of digital inkjet printers

SOLVENT

POLO_{XL}

3.2 MTR ROLL-TO-ROLL SOLVENT PRINTER

HIGH-QUALITY, MAX PROFITABILITY, HIGH-SPEED SOLVENT PRINTER



Polo XL, 3.2 meter industrial-grade solvent printer is a combination of high speed and high-quality printing. Designed to provide an unprecedented solution for indoor and outdoor printing needs with production capacity up to 4700 sqft/hr. Its independent drive technology renowned for high speed, high-quality output, reliability, and low running costs

SPECIFICATION:

- Optimized weight distribution, enabling perfect CG
- 3 meter wide Take-up system
- Enhanced printing dryer
- Enhanced Aerodynamic Carriage
- Transport and Relocation Friendly



SPECIFICATIONS

		POLO XL				
Models		GB4424	GB8424	GB4412	GB8412	
Printing Technology		Drop-on-demand, Piezo electric inkjet				
No. of Print Heads		4 Head	8 Head	4 Head	8 Head	
Print Heads		Grayscale Industrial Grade Jetting assemblies				
Media	Width	3300 mm				
	Thickness	Maximum 3.0 mm with Liner				
	Roll Outer Diameter	Maximum 352 mm				
	Roll Weight	Maximum 150 Kg				
	Core Diameter	76.2 mm, 50.8 mm				
Types		SAV, PAV Banner, Backlit Film, Window Film, Fabric (Solvent Base)				
Printing Width		Maximum 3200 mm				
Ink	Types	Solvent based pigment inks				
	Color	4 colors				
Printing Resolution (dots per inch)		Maximum up to 1440 dpi				
Distance Accuracy		Error of less than ±0.3% of distance travelled, or ±0.3 mm whichever is greater				
Media Heating System		Pre-heater and post-heater, setting range for the preset temperature: 30°C to 60°C. Dryer Setting range for the preset temperature: 30°C to 60°C				
Connectivity		High Speed USB				
Power Requirements		AC 220V , 40A (±10%), 50Hz				
Dimensions (Printer only)		4960 mm x 950 mm x 1580 mm (LxWxH)				
RIP software		Onyx (ColorJet Edition)				
Weight (approx. with stand)		1500 kgs				
Environmental	Power ON	Temperature: 18°C to 28°C, Humidity: 35 to 80%RH (Non-condensing)				
	Power OFF	Temperature: 5°C to 40°C, Humidity: 20 to 80%RH (Non-condensing)				
		Print Speed				
		KM 1024 i		KM 512 i		
		GB4424	GB8424	GB4412	GB8412	
Modes	Print DPI	Passes	Speed (In Sq. Feet/hr)	Speed (In Sq. Feet/hr)	Speed (In Sq. mtr/hr)	Speed (In Sq. Feet/hr)
Mode 1	360 x 360	1	2830	4715	-	-
Mode 2	360 x 720	2	1636	2744	-	-
Mode 3	360 x 1080	3	1162	1937	-	-
Mode 4	360 x 1440	4	904	1506	-	-
Mode 5	360 x 1080	6	645	1076	-	-
Mode 6	360 x 1440	8	516	861	-	-
Mode 1	360 x 360	2	-	-	1614	2818
Mode 2	360 x 540	3	-	-	1093	2000
Mode 3	360 x 720	4	-	-	806	1476
Mode 4	720 x 720	4	-	-	521	930
Mode 5	720 x 1080	6	-	-	327	640
Mode 6	720 x 1440	8	-	-	249	490



For machine demo,
scan QR code

COLORJET
India's largest manufacturer of digital inkjet printers

SOLVENT

SONIQ i

3.2 MTR ROLL-TO-ROLL PRINTER

SLEEK, COMPACT & FUTURISTIC PRINTER



SoniQ i delivers excellent print quality at an ultra-fast speed of 1232 sqft/hr and offers maximum performance at a minimum investment. The heavy-duty forefront industrial print heads of the machine are engineered for lasting performance. With 3.2 mtr roll capability to accommodate every media size, it is also an excellent alternative for huge savings on inks & time with pressure purge for individual colors.

PREMIUM FEATURES:

FGP (FOREFRONT GANTRY PRECISION) TECHNOLOGY
SoniQ i comes with unmatched FGP technology, which ensures extremely less deviation between jet to bed distance (<0.1mm) over the entire printing span and maintains consistent print quality.

EDGE EXCELLENCE TECHNOLOGY
Enhance Printing Precision on the Border of the Media and helps in the smooth change over of carriage direction, leading to less jerk and lesser wear and tear.

DIGITAL VISCOSITY OPTIMIZATION
Optimized with digital observation of Ink viscosity curve, which helps in maintaining a stable waveform of jetting and ensures constant print quality.

PRESSURE DECLOGGER
SoniQ i offers a fifth button for **declogging**, which helps in maintaining pressure for efficient cleaning and reducing ink wastage.

SPECIFICATIONS

Model		SoniQ i		
Model		S4412		
Printing Technology		Drop-on-demand, Piezo electric inkjet		
Print Heads		Industrial Grade Jetting Assemblies		
Media	Width	3300 mm (129 in)		
	Thickness	Maximum 3.0 mm (120 mil) with Liner (flexible)		
	Roll Outer Diameter	Maximum 300 mm (12 in), 50.8 (2 in)		
	Roll Weight	Maximum 90 kg		
	Core Diameter	76.2 mm (3 in)		
	Types	SAV, PAV Banner, Backlit Film, Window Film, Fabric (For Solvent Printing)		
Printing Width		Maximum 3200 mm (126 in)		
Ink	Type	Solvent / Mid Solvent Inks		
	No. of Colors	4 Colors (CMYK)		
Printing Resolution (dots per inch)		Maximum up to 1440 dpi		
Distance Accuracy		Error of less than ± 0.3% of distance travelled, or ± 0.3 mm whichever is great		
Media Heating System		Pre-heater and post-heater , setting range for the pre-set temperature: 30°C to 60°C Dryer setting range for the pre-set temperature: 30°C to 60°C		
Connectivity		High Speed USB		
Power Requirements (Peak)		AC 220 v ±10%, 20 Amps, 50/60 Hz		
Printer Dimensions		4525mm x 885mm x 1500mm (LxWxH)		
RIP Software		FlexiPrint		
Weight (approx. with stand)		642 Kgs		
Environmental	Power ON	Temperature: 18°C to 28°C Humidity: 20 to 40% RH (non-condensing)		
	Power OFF	Temperature: 5 to 40°C Humidity: 20 to 80%RH (non-condensing)		
Speed (In Sqm/hr)	Print DPI	Passes	Sqm/hr	Sqft/hr
Mode 1	360 x 360	2	114	1232
Mode 2	360 x 540	3	77	830
Mode 3	360 x 720	4	62	664
Mode 4	720 x 720	4	33	348
Mode 5	720 x 1080	6	22	232
Mode 6	720 x 1440	8	17	177

SOLVENT

NEPTUNE PLUS

3.2 METRE ROLL-TO-ROLL SOLVENT PRINTER

TECHNOLOGICALLY ADVANCED AND INNOVATIVE SIGNAGE PRINTER



NEPTUNE PLUS is a 3.2 Metre roll-to-roll solvent printer that combines high quality and high production speed. This newly launched NEPTUNE PLUS is ColorJet's signature flagship product. With its well-renowned robust body combined with improvised & advanced features, it offers very high value for money in its class and will be an unending success story for all its users. It is based on industrial Drop-on-Demand Japanese print head technology.

NEPTUNE PLUS is the finest solution for outdoor advertising applications customers, who need the quality prints at a very high speed. It is ideal for sign shops and commercial printers seeking to upgrade the quality and offer greater versatility and speed at an optimally cost-effective price. It is also an excellent solution for corporate in-house production of exhibition graphics, posters, signage, billboards, etc.



SPECIFICATIONS

Neptune Plus				
Model		I4442	I8442	
Printing Technology		Drop-on-demand, Piezo electric inkjet		
Print Heads		Industrial Grade Jetting Assemblies		
Number of heads		4	8	
Media	Width	3300 mm (129 in)		
	Thickness	Maximum 3.0 mm (120 mil) with Liner (flexible)		
	Roll Outer Diameter	Maximum 300 mm (12 in), 50.8 (2 in)		
	Roll Weight	Maximum 90 kg		
	Core Diameter	76.2 mm (3 in)		
Types		SAV, PVC Banner, Backlit Film, Window Film, Fabric (Solvent Base)		
Printing Width		Maximum 3200 mm (126 in)		
Ink	Type	Solvent/Mild Solvent inks		
	No. of Colors	4 Colors (CMYK)		
Printing Resolution (dots per inch)		Maximum 1440 dpi		
Distance Accuracy		Error of less than ± 0.3% of distance travelled, or ± 0.3 mm whichever is great		
Media Heating System		Pre-heater and post-heater, setting range for the pre-set temperature: 30°C to 60°C Dryer setting range for the pre-set temperature: 30°C to 60°C		
Connectivity		High Speed USB		
Power Requirements		AC 220 v ±10%, 20 Amps, 50/60 Hz		
Printer Dimensions		4510mm x 1022mm x 1355mm (L x W x H)		
Ink Compatibility		Solvent Inks		
Weight (Gross)		470 Kgs		
Environmental	Power ON	Temperature: 18°C to 28°C Humidity: 35 to 80% RH (non-condensing)		
	Power OFF	Temperature: 5°C to 40°C Humidity: 20 to 80% RH (non-condensing)		
Speed	Print DPI	Passes	I4442	I8442
Mode 1	180 x 360	2	42 sqm/hr (452 sqft/hr)	70 sqm/hr (753 sqft/hr)
Mode 2	180 x 540	3	28 sqm/hr (300 sqft/hr)	55 sqm/hr (592 sqft/hr)
Mode 3	180 x 720	4	24 sqm/hr (259 sqft/hr)	40 sqm/hr (430 sqft/hr)



India's largest manufacturer of digital inkjet printers

ECO SOLVENT

POLO HQ™

6 COLOR
OPTION AVAILABLE

HIGH SPEED ECO-SOLVENT INDUSTRIAL PRINTER



BUILT TO
DELIVER
GREAT
QUALITY
PRINTS
QUICKLY



POLO HQ, the high-speed Industrial grade eco-solvent printer is built for speed & quality. At a speed of 1175 sqft/hr, **POLO HQ** displays quality print for mass production supported by IR based effective evaporative drying system to meet the high volume requirement. The 3.2 mtr roll-to-roll eco-solvent printer based on industrial grade jetting assembly ensures accuracy at high speed. The environment-friendly **POLO HQ** is built on heavy duty structure made with high mechanical precision standard to meet the growing requirement of those who want speed with quality.

GREEN TECH INK MECHANISM

Polo HQ is highly eco-friendly and is based on ColorJet's **Greentech**. Greentech was born out of ColorJet's commitment to printing solutions in the eco-friendly green printing domain. GreenTech is powered by ColorJet's unique GreenTech printing technology that enables printing with **environment-friendly eco-solvent inks**. GreenTech ensures low chemical emissions to reduce environmental and health hazards. GreenTech eliminates harmful cyclohexanone and uses non-volatile organic compounds (NVOCs) for print results that are water resistant, fade resistant, media independent and UV safe - in addition to being more environment friendly. GreenTech works towards complete solutions that adequately successfully address human, environment, and commercial issues.



SPECIFICATIONS

		POLO HQ		
Models		G4425	G6625	
Printing Technology		Drop-on-demand, Piezo Electric inkjet		
Print Head		Grayscale Industrial Grade Jetting Assemblies		
No. of Print Heads		4	6	
Media	Width	3300mm		
	Thickness	Maximum 3.00 mm with liner		
	Roll Outer Diameter	Maximum 3.52 m		
	Roll Weight	Maximum 150 Kg		
	Core Diameter	76.2mm , 50.8mm		
Types		Fabric (Ecosolvent based), SAV, PVC Banner, Backlit Film, Window Film		
Printing Width		Maximum 3200mm		
Inks	Types	Eco Solvent Ink		
	Color	4 Colors	6 Colors	
Printing Resolution (dots per inch)		Maximum Up to 1440 dpi		
Distance Accuracy		Error of less than ±0.3% of distance traveled, or ±0.3 mm whichever is greater		
Media Heating System		Pre heater and Post-heater, setting range for the preset temperature: 30 to 60°C Dryer Setting range for the preset temperature: 30 to 60°C		
Connectivity		High Speed USB		
Power Requirements		AC 220 V+ _10%, 20 A, 50/60 Hz		
Dimensions		4960mm x 950mm x 1580 mm (LxWxH)		
RIP software		Onyx Gamaprint Rip (ColorJet Edition)		
Weight (approx. with stand)		1500 Kgs N.W., 1650 Kgs G.W		
Environmental	Power ON	Temperature: 18 °C to 28 °C, Humidity: 35 to 80%RH (Non-condensing)		
	Power OFF	Temperature: 5 °C to 40 °C, Humidity: 20 to 80%RH (Non-condensing)		
Modes	DPI	Passes	Sqm/hr	Sqft/hr
Mode 1	540 x 720	2	109	1175
Mode 2	540 x 1080	3	73	785
Mode 3	540 x 1440	4	46	495
Mode 4	540 x 1080	6	38	410
Mode 5	540 x 1440	8	26	280

ECO SOLVENT

SONIQ HQ PLUS

TRUE 3.2 MTR ECO SOLVENT PRINTING MACHINE

PROFESSIONAL QUALITY BEYOND COMPARE



Super-fast speed and vibrant prints of **SONIQ HQ PLUS** make it the go-to solution for indoor & outdoor printing needs. The configuration supports CMYK options with speeds achieving upto 915 Sqft/hr.

SONIQ HQ PLUS is the most suitable choice for a large array of ECO-solvent applications like Fabric, Canvas, SAV, PAV Banner, Window Film, Backlit both Eco-Solvent & Solvent Base.

PREMIUM FEATURES:

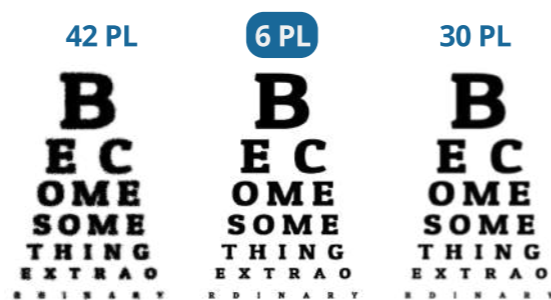


6 PL RAZOR-SHARP PRINT

Capable of **6 picoliter droplets** that produce higher-resolution prints. The smallest picoliter is able to express clear thin lines, remarkable details, and needle-sharp text.



BioPrint™ Technology is specially created for prints on **Bio-Degradable and 100% Recyclable** Fabric media offers future-proof sustainable solutions to all the print business problems.



SONIQ HQ PLUS which is equipped with **GreenTech™** is compliant with all International Print Standards for providing perfect print solutions to the customers as per the industry and environmental norms.

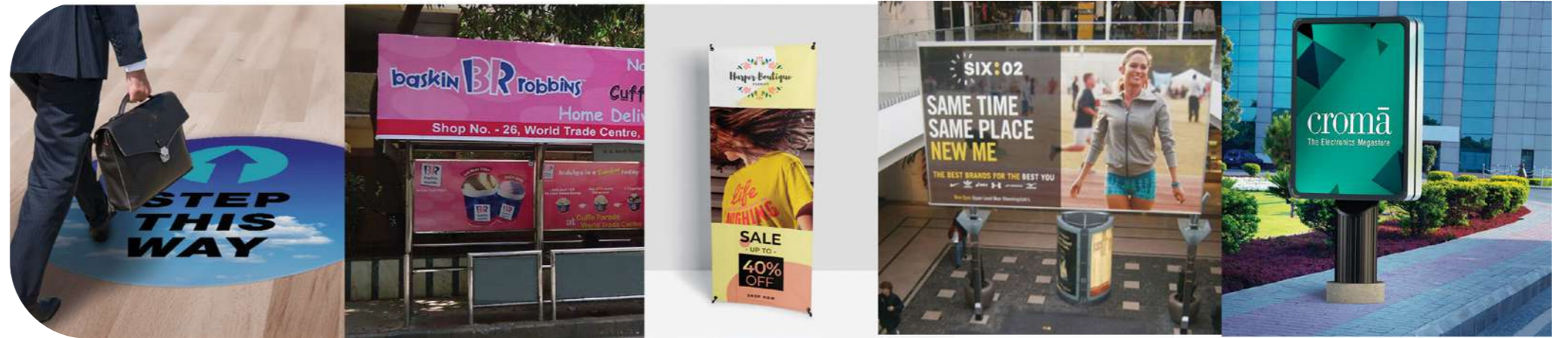
SPECIFICATIONS

Model		SoniQ HQ Plus S4427		
Printing Technology		Drop-on-demand, Piezo electric inkjet		
Print Heads		Industrial Grade Jetting Assemblies		
Fabric	Width	3300 mm (129 in)		
	Thickness	Maximum 3.00 mm with Liner (Flexible)		
	Roll Outer Diameter	Maximum 300 mm (12 in), 50.8 (2 in)		
	Roll Weight	Maximum 90 kg		
	Core Diameter	76.2 mm (3 in)		
Types		Fabric, SAV, Canvas, PVC Banner, Window Film		
Printing Width		Maximum 3200 mm (126 in)		
Inks	Type	Eco Solvent		
	No. of Colors	4 Colors (CMYK)		
Printing Resolution (dots per inch)		Maximum 1440 dpi		
Distance Accuracy		Error of less than ± 0.3% of distance travelled, or ± 0.3 mm whichever is great		
Media Heating System		Pre-Heater and Post-Heater, setting range for the pre-set temperature: 30°C to 60°C Dryer setting range for the pre-set temperature: 30°C to 60°C		
Connectivity		High Speed USB		
Power Requirements		AC 220 v ±10%, 20 A, 50/60 Hz		
Printer Dimensions		4525 mm x 885 mm x 1500 mm (L x W x H)		
RIP Software		ONYX		
Weight (Gross)		642 Kgs		
Environmental	Power ON	Temperature: 18°C to 28°C Humidity: 20 to 80% RH (non-condensing)		
	Power OFF	Temperature: 5°C to 40°C Humidity: 20 to 80% RH (non-condensing)		
Modes	DPI	Passes	Sqm/hr	Sqft/hr
Mode 1	720 x 720	2	85	915
Mode 2	720 x 1080	3	55	592
Mode 3	720 x 1440	4	45	485
Mode 4	720 x 1080	6	28	300
Mode 5	720 x 1440	8	23	248

ECO SOLVENT

NEPTUNE HQ

ECO SOLVENT SUPER WIDE
2-IN-1 INDOOR & OUTDOOR SIGNAGE PRINTER



HIGH-PRODUCTIVITY, HIGHLY ECO-FRIENDLY PRINTER



Neptune HQ, the high-speed Industrial grade eco-solvent printer is built for speed & quality. At a speed of 503 sqft/hr, Neptune HQ is engineered for highest quality of vinyl and flex printing with eco solvent inks. The 3.2 mtr eco-solvent printer based on industrial grade jetting assembly ensures accuracy at high speed.

The environment-friendly **Neptune HQ** is built on heavy duty structure made with high mechanical precision standard to meet the growing requirement of those who want speed with quality.

- One machine for indoor and outdoor signage
- Super-detailed eco-solvent printing across 10 ft print width
- Greentech technology for environment-friendly, odorless printing

SPECIFICATIONS

NEPTUNE HQ				
Model		Q4426		
Printing Technology		Drop-on-demand, Piezo Electric Inkjet		
Print Heads		Industrial Grade Jetting Assemblies		
Media	Width	3300 mm (129 in.)		
	Thickness	Maximum 3.0 mm (120 mil) with liner (flexible)		
	Roll Outer Diameter	Maximum 300 mm (12 in), 50.8 (2 in)		
	Roll Weight	Maximum 90 kgs		
	Core Diameter	76.2 mm (3 inch)		
Types		SAV, PVC Banner, Backlite Film, Window Film, Fabric (ECO Solvent Base)		
Printing Width		Maximum 3200 mm (126 inch.)		
Inks	Types	Eco Solvent Inks		
	Color	4 Colors (CMYK)		
Printing Resolution (dots per inch)		Maximum 1440 dpi		
Distance Accuracy		Error of less than ±0.3 % of distance traveled, or ±0.3 mm, whichever is greater		
Media Heating		Pre-heater and Post-heater, setting range for the preset temperature: 30 to 60°C. Dryer setting range for the preset temperature: 30 to 60°C		
Connectivity		High Speed USB		
Power Requirements		AC 220 V ±10%, 20 A, 50/60 Hz		
Dimensions (Printer Only)		4510 x 1022 x 1355 mm (LxWxH)		
RIP Software		FlexiRip (ColorJet Edition)		
Weight (approx. with stand)		470 Kgs		
Environmental	Power ON	Temperature: 18 to 28°C Humidity: 20 to 80%RH (Non-condensing)		
	Power OFF	Temperature: 5 to 40°C Humidity: 20 to 80%RH (Non-condensing)		
Print Mode	Print DPI	Passes	Sqm/hr	Sqft/hr
Production	720 x 720	2	46	503
Standard	720 x 1080	3	31	342
Fine	720 x 720	4	24	262
Quality	720 x 1080	6	16	175
High Quality	720 x 1440	8	12	133

