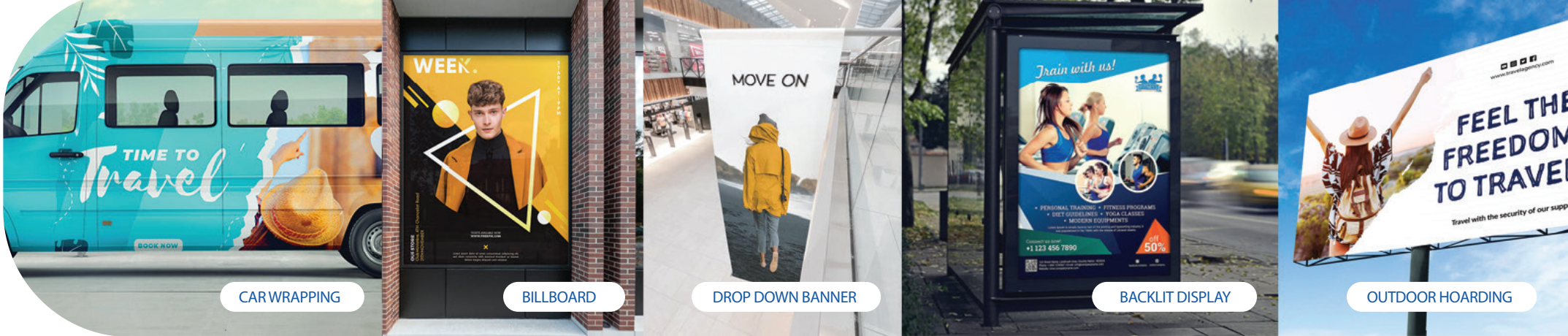


SOLVENT

SONIQ i

3.2 MTR ROLL-TO-ROLL PRINTER

SLEEK, COMPACT & FUTURISTIC PRINTER



CAR WRAPPING

BILLBOARD

DROP DOWN BANNER

BACKLIT DISPLAY

OUTDOOR HOARDING



SoniQ i delivers excellent print quality at an ultra-fast speed of 1232 sqft/hr and offers maximum performance at a minimum investment. The heavy-duty forefront industrial print heads of the machine are engineered for lasting performance. With 3.2 mtr roll capability to accommodate every media size, it is also an excellent alternative for huge savings on inks & time with pressure purge for individual colors.

PREMIUM FEATURES:

FGP (FOREFRONT GANTRY PRECISION) TECHNOLOGY

SoniQ i comes with unmatched FGP technology, which ensures extremely less deviation between jet to bed distance (<0.1mm) over the entire printing span and maintains consistent print quality.

EDGE EXCELLENCE TECHNOLOGY

Enhance Printing Precision on the Border of the Media and helps in the smooth change over of carriage direction, leading to less jerk and lesser wear and tear.

DIGITAL VISCOSITY OPTIMIZATION

Optimized with digital observation of Ink viscosity curve, which helps in maintaining a stable waveform of jetting and ensures constant print quality.

PRESSURE DECLOGGER

SoniQ i offers a fifth button for **declogging**, which helps in maintaining pressure for efficient cleaning and reducing ink wastage.

SPECIFICATIONS

SoniQ i				
Model			S4412	
Printing Technology			Drop-on-demand, Piezo electric inkjet	
Print Heads			Industrial Grade Jetting Assemblies	
Media	Width		3300 mm (129 in)	
	Thickness		Maximum 3.0 mm (120 mil) with Liner (flexible)	
	Roll Outer Diameter		Maximum 300 mm (12 in), 50.8 (2 in)	
	Roll Weight		Maximum 90 kg	
	Core Diameter		76.2 mm (3 in)	
	Types		SAV, PAV Banner, Backlit Film, Window Film, Fabric (For Solvent Printing)	
Printing Width			Maximum 3200 mm (126 in)	
Ink	Type		Solvent / Mid Solvent Inks	
	No. of Colors		4 Colors (CMYK)	
Printing Resolution (dots per inch)			Maximum up to 1440 dpi	
Distance Accuracy			Error of less than ± 0.3% of distance travelled, or ± 0.3 mm whichever is great	
Media Heating System			Pre-heater and post-heater , setting range for the pre-set temperature: 30°C to 60°C Dryer setting range for the pre-set temperature: 30°C to 60°C	
Connectivity			High Speed USB	
Power Requirements (Peak)			AC 220 v ±10%, 20 Amps, 50/60 Hz	
Printer Dimensions			4525mm x 885mm x 1500mm (LxWxH)	
RIP Software			FlexiPrint	
Weight (approx. with stand)			642 Kgs	
Environmental	Power ON		Temperature: 18°C to 28°C Humidity: 20 to 40% RH (non-condensing)	
	Power OFF		Temperature: 5 to 40°C Humidity: 20 to 80%RH (non-condensing)	
Modes	Print DPI	Passes	Sqm/hr	Sqft/hr
Mode 1	360 x 360	2	114	1232
Mode 2	360 x 540	3	77	830
Mode 3	360 x 720	4	62	664
Mode 4	720 x 720	4	33	348
Mode 5	720 x 1080	6	22	232
Mode 6	720 x 1440	8	17	177



For Soniq i
Scan Here